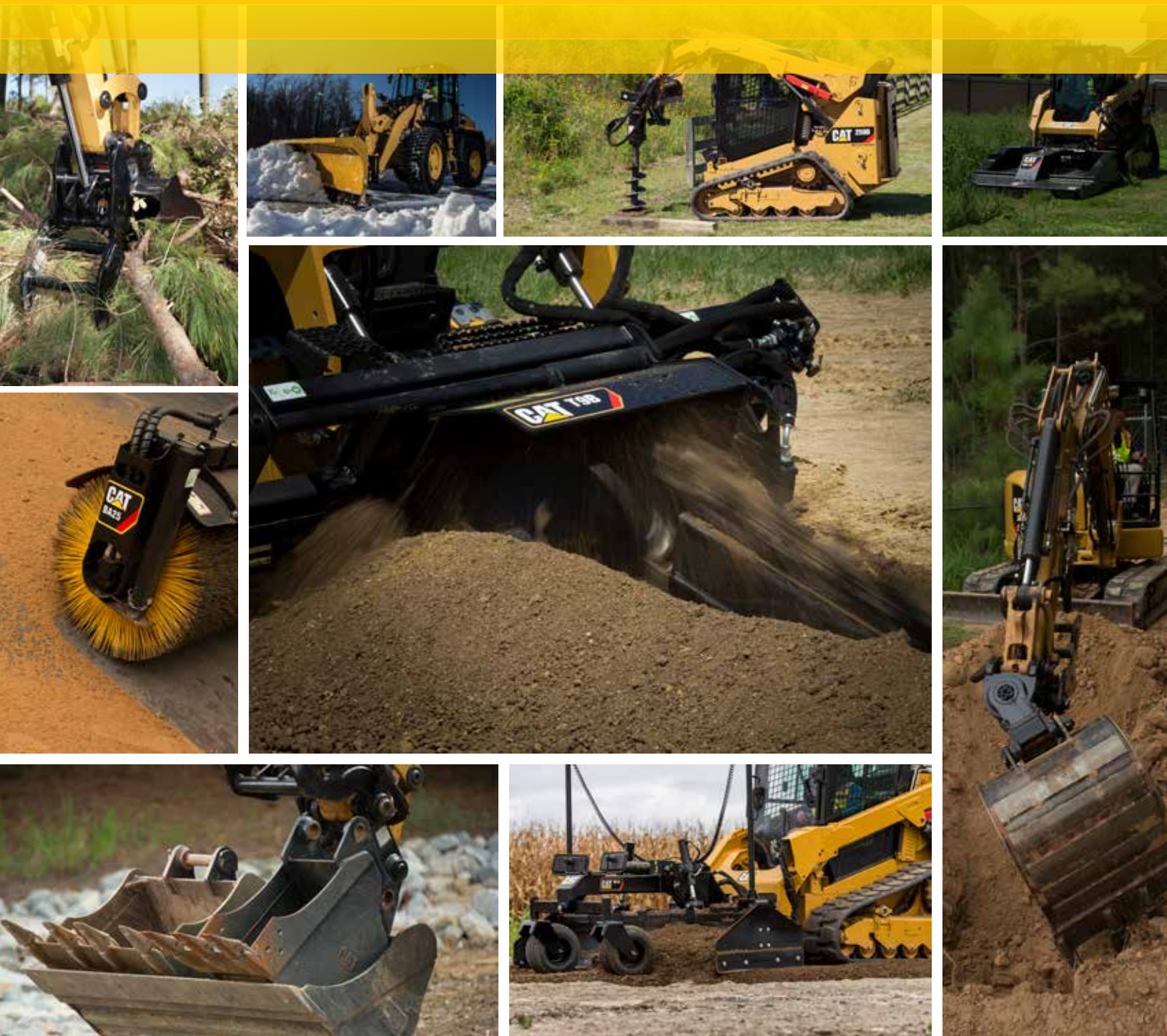


Building Construction Products

Work Tool Attachments

PRODUCT LINE



Wheel Loaders (Compact)

903C2	907M	910M
906K	908K	914K
906M	908M	914M
907K	910K	918M



Augers

	Model	Drive Shaft Torque @ Max Pressure		Drive Method
		Nm	(lbf ft)	
A14B	906K/M-90K/8M	2304	(1700)	Direct
A19B	906K/M-908K/M	4118	(3037)	Single Planetary
A26B	908K/M	6826	(5034)	Double Planetary



Bale Grabs

	Model	Maximum Opening		Unit Weight	
		mm	(in)	kg	(lb)
	903C2, 906K/M-908K/M	1803	(71)	261	(575)
	903C2, 906K/M-908K/M	2133	(84)	263	(580)



Bale Spears

	Model	Tine Length		Unit Weight	
		mm	(in)	kg	(lb)
Single	903C2, 906K/M-908K/M	990/1245	(39/49)	72	(158)
Dual	903C2, 906K/M-908K/M	990/1245	(39/49)	121	(266)



Blades

	Model	Width		Height	
		mm	(in)	mm	(in)
Angle	906K/M-908K/M	1829/2134	(72/84)	614	(24)
Angle-IT	910K/M-918M	2667/3099	(105/122)	762/1041	(30/41)
Dozer	906K/M-908K/M	2007/2337	(79/92)	619	(24)
Straight	910K/M-918M	2438	(96)	1321	(52)



Brooms

	Model	Sweeping Width Straight		Brush Diameter		
		mm	(in)	mm	(in)	
Angle	BA118C	906K/M-908K/M	2119	(83)	815	(32)
	BA22	906K/M-908K/M	2200	(87)	700	(28)
	BA25	910K/M-918M	2500	(98)	700	(28)
Pickup	BP115C	903C2, 906K/M-908K/M	1524	(60)	660	(26)
	BP118C	903C2, 906K/M-908K/M	1829	(72)	660	(26)
	BP22	906K/M-908K/M	2200	(87)	700	(28)
	BP25	910K/M-918M	2500	(98)	700	(28)
Utility	BU115	906K/M-908K/M	1510	(59)	660	(26)
	BU118	906K/M-908K/M	1865	(73)	660	(26)



Buckets

	Model	Width Range		Capacity Range	
		mm	(in)	m ³	(yd ³)
Flat Floor Buckets	910K/M-918M	2401-2434	(95-96)	1.4-1.8	(1.8-2.3)
General Purpose	903C2, 906K/M-908K/M	1778-2413	(70-95)	0.6-1.4	(0.8-1.8)
General Purpose Performance Series	910K/M-918M	2388-2429	(94-95.6)	1.4-2.1	(1.9-2.6)
Industrial Grapple	906K/M-908K/M	2080	(82)		
Light Material	906K/M-908K/M	1780-2080	(70-81.9)	1.0-1.5	(1.3-2.0)
Material Handling	903C2	2134-2591	(84-102)	1.07-1.33	(1.40-1.74)
Multi-Purpose	906K/M-908K/M	1784-2080	(70-82)	0.6-0.9	(0.8-1.2)
Side Dump	910K/M-918M	2743	(108)	1.2-1.5	(1.6-2.0)
Woodchip	910K/M-918M	3099	(122)	3.8	(5.0)

Wheel Loaders (Compact) *(continued)*



Cold Planers

	Model	Max Drum Width		Number of Bits (conical)	Drum Torque		
		mm	(in)		N-m	lb-ft	
	PC104B	906K/M-908K/M	350	(14)	42	1350	(996)
	PC205B	906K/M-908K/M	450	(18)	48	2047	(1510)
	PC305B	906K/M-908K/M	450	(18)	48	3470	(2558)
	PC306B	906K/M-908K/M	600	(24)	60	3470	(2558)
	PC310B	906K/M-908K/M	1000	(39)	78	3350	(2470)



Couplers

	Model	Weight		
		kg	(lb)	
	ISO 'Wide Coupler'	910M/914M	204	(450)
	IT 'Standard Coupler'	910M/914M/918M	196	(432)
	SSL	906K/M-908K/M	103	(227)
	Horizontal Pin Lock	906K/M-908K/M	63	(139)



Cutters

	Model	Cut Wheel Diameter		Weight		
		mm	(in)	kg	(lb)	
	Mechanical Asphalt	910K/M-918M	470	(19)	193	(425)



Forks

	Model	Tine Length		Carriage Width		
		mm	(in)	mm	(in)	
	Log & Lumber	910K/M-918M	1219-1524	(48-60)	1829-2184	(72-86)
	Pallet	All	914-1372	(36-54)	1168-1550	(46-61)



Industrial Brushcutters

	Model	Cutting Width		Cutting Head		
		mm	(in)	Speed rpm	Max Cutting Diameter mm (in)	
	BRX118	906K/M-908K/M	1829	(72)	473	200 (8)
	BRX318	906K/M-908K/M	1829	(72)	596	200 (8)



Material Handling Arms

	Model	Width w/side step		Load Length-end		
		mm	(in)	mm	(in)	
	Fixed Length	906K/M-908K/M	1316	(51.8)	768	(30)
	Model	Retracted Length		Extended Length		
		mm	(in)	mm	(in)	
	Extendible	910K/M-918M	2438/2007	(96/79)	4039/3937	(159/155)



Mixing Buckets

	Model	Rated Capacity		Unit Weight		
		L	(yd ³)	kg	(lb)	
	MB200	903C2, 906K/M-908K/M	200	(0.26)	290	(639)
	MB250	903C2, 906K/M-908K/M	250	(0.33)	430	(948)



Mulchers

	Model	Working Width		Max Cutting Diameter		
		mm	(in)	mm	(in)	
	HM112C	903C2, 906K/M-908K/M	1240	(49)	200	(8)
	HM115C	903C2, 906K/M-908K/M	1240	(49)	200	(8)
	HM215C	906K/M-908K/M	1480	(58)	200	(8)



Rakes

	Model	Working Width		Bucket Capacity			
		mm	(in)	m ³	(yd ³)		
Landscape Rakes	LR15B	906K/M-908K/M	1576	(62)	0.31	(0.39)	
	LR18B	906K/M-908K/M	1883	(74)	0.34	(0.44)	
Power Box Rakes	Model	Drum Width		Max Angling (right or left) degrees			
		mm	(in)				
		PR172	906K/M-908K/M	1829	(72)	20	
		PR184	906K/M-908K/M	2134	(84)	20	
	PR190	906K/M-908K/M	2286	(90)	20		

Silage Defacers



	Model	Cutting Width		Unit Weight	
		mm	(in)	kg	(lb)
DFS118	903C2, 906K/M-908K/M	1841	(73)	425	(937)
DFS121	903C2, 906K/M-908K/M	2146	(85)	477	(1052)
DFS124	903C2, 906K/M-908K/M	2451	(97)	503	(1109)

Snow Blowers



	Model	Intake Width		Throw Distance	
		mm	(in)	m	(ft)
SR118	906K/M-908K/M	1854	(73)	12.2	(40)
SR121	906K/M-908K/M	2159	(85)	12.2	(40)
SR318	906K/M-908K/M	1854	(73)	13.7	(45)
SR321	906K/M-908K/M	2159	(85)	13.7	(45)

Snow Plow



	Model	35° Angled Width		Unit Weight	
		mm	(in)	kg	(lb)
1.8 m (6 ft)	903C2, 906K/M-908K/M	1498	(59)	450	(992)
2.1 m (7 ft)	903C2, 906K/M-908K/M	1748	(69)	477	(1052)
2.4 m (8 ft)	903C2, 906K/M-908K/M	1997	(79)	502	(1107)
2.7 m (9 ft)	All	2247	(88)	527-855	(1162-1884)
3.0 m (10 ft)	All	2497	(98)	552-902	(1218-1989)
3.6 m (12 ft)	914K/M-918M	2996	(118)	989	(2180)

Snow Pushes



	Model	Trip Edge	Trip Edge		Width	
			Sections	mm	(in)	
2.4 m (8 ft)*	903C2, 906K/M-908K/M	Rubber/Steel	0/1	2438	(96)	
3.0 m (10 ft)*	903C2, 906K/M-908K/M	Rubber/Steel	0/2	3048	(120)	
3.6 m (12 ft)*	903C2, 906K/M-908K/M	Rubber/Steel	0/2	3658	(144)	
3.0 m (10 ft) – IT	914K/M-918M	Rubber/Steel	2	3048	(120)	
3.6 m (12 ft) – IT	914K/M-918M	Rubber/Steel	2	3658	(144)	
3.0 m (10 ft) – Bkt Receiver	914K/M-918M	Rubber/Steel	2	3048	(120)	
3.6 m (12 ft) – Bkt Receiver	914K/M-918M	Rubber/Steel	2	3658	(144)	

*Optional back drag available.

Stump Grinders



	Model	Width		Length	
		mm	(in)	mm	(in)
SG16B	906K/M-908K/M	1175	(46)	1737	(69)

Tillers



	Model	Working Width		Working Depth	
		mm	(in)	mm	(in)
LT13B	906K/M-908K/M	1354	(53.3)	25-152	(1-6)
LT18B	906K/M-908K/M	1848	(73)	25-152	(1-6)

Trenchers



	Model	Overall Width		Working Depth	
		mm	(in)	mm	(in)
T6B	903C2, 906K/M-908K/M	1426	(56)	914	(36)
T9B	903C2, 906K/M-908K/M	1901	(75)	1219	(48)
T15B	906K/M-908K/M	1901	(75)	1524	(60)

Vibratory Drum Compactors



	Model	Drum Width		Dynamic Force	
		mm	(in)	kg	(lb)
CV16B	903C2, 906K/M-908K/M	1676	(66)	5399	(11903)
CV18B	903C2, 906K/M-908K/M	1854	(73)	5399	(11903)

Wheel Saws



	Model	Wheel Width		Number of Bits	
		mm	(in)	(conical)	
SW345B	906K/M-908K/M	80	(3)	64	

Wheel Loaders (Small)

924K 930K 938K
926M 930M 938M



Brooms

	Model	Sweeping Width		Brush Diameter	
		mm	(in)	mm	(in)
Angle	BA25	2500	(98)	700	(28)
	BA30	3000	(118)	915	(36)
Pickup	BP25	2500	(98)	700	(28)



Buckets

	Model	Width Range		Capacity Range	
		mm	(in)	m ³	(yd ³)
Bagasse	938K	3060	(120)	5.5	(7.2)
Flat Floor - Performance Series	All	2532-2738	(100-108)	2.3-2.9	(3.0-3.8)
General Purpose - Performance Series	All	2520-2747	(99-108)	1.9-2.9	(2.5-3.8)
Grapple	All	2700	(106)	1.78	(2.33)
Grapple	All	2697	(106)	2.5/2.6	(3.3/3.4)
High Dump	All	2550-3060	(100-120)	3.0-5.0	(3.9-6.5)
Light Material	All	2750	(108)	3.0-5.0	(4.0-6.5)
Multi-Purpose	All	2550-2590	(100-102)	2.0-2.2	(2.6-2.9)
Sand & Gravel	All	2750	(108)	2.5-3.5	(3.2-4.5)
Side Dump	All	3105	(122)	1.9	(2.5)
Waste Handling	All	2743	(108)	3.2-4.0	(4.25-5.25)
Waste Load & Carry	All	2927	(115)	4.9	(6.5)
Waste Dozing	All	2927	(115)	4.3	(5.6)
Woodchip	All	3330	(131)	4.9-5.6	(6.4-7.3)



Couplers

	Model	Weight	
		kg	(lb)
Fusion™	All	252-392	(556-865)
ISO	All	361	(796)



Cutters

	Model	Cut Wheel Diameter		Weight	
		mm	(in)	kg	(lb)
Mechanical Asphalt	All	470	(18.5)	193	(425)



Forks

	Model	Tine Length		Carriage Width	
		mm	(in)	mm	(in)
Construction	All	1524/1829	(60/72)	2440/2498	(96/98)
Log & Lumber	All	1219-1829	(48-72)	1839/2134	(72/84)
Sorting Grapple Fork	930K/M-938K/M	1269	(50)	1812	(71)
Pallet	All	1070-1524	(42-60)	1270-1566	(50-62)
Pipe & Pole	930K/M-/938K/M	1829	(72)	2693	(106)



Material Handling Arms

	Model	Retracted Length		Extended Length	
		mm	(in)	mm	(in)
Extendible	All	2760	(109)	4137	(163)



Snow Plow

	Model	35° Angled Width		Unit Weight	
		mm	(in)	kg	(lb)
3.0 m (10 ft)	All	2497	(98)	1389	(3061)
3.6 m (12 ft)	All	2996	(118)	1525	(3362)
4.2 m (14 ft)	All	3495	(138)	1648	(3633)



Snow Pushes

	Model	Trip Edge	Trip Edge Sections	Width		Unit Weight	
				mm	(in)	kg	(lb)
3.6 m (12 ft) – Fusion	All	Steel	2	3658	(144)	1330	(2931)
4.2 m (14 ft) – Fusion	All	Steel	2	4267	(168)	1441	(3177)
4.9 m (16 ft) – Fusion	All	Steel	2	3048	(120)	1552	(3422)
3.6 m (12 ft) – Bkt Reciever	All	Steel	2	3658	(144)	1264	(2786)
4.2 m (14 ft) – Bkt Reciever	All	Steel	2	3658	(144)	1375	(3031)
4.9 m (16 ft) – Bkt Reciever	All	Steel	2	3048	(120)	1486	(3277)

Telehandlers

TH255C	TH408D	TL1055D
TH306D	TH514D	TL1255D
TH357D	TL642D	
TH3510D	TL943D	



Buckets

	Model	Width		Capacity	
		mm	(in)	m ³	(yd ³)
General Purpose	All	1855-2600	(73-102)	0.76-1.5	(1.0-2.0)
Grapple	All	1854-2450	(73-96)	0.76-1.3	(1.0-1.7)
Light Material	All TH models	1829-2700	(72-106)	1.3-3.0	(1.7-3.9)
Multi-Purpose	All (except TH306D, TH514D)	1879-2413	(74-95)	0.36-1.0	(0.48-1.31)



Carriages

	Model	Width	
		mm	(in)
Dual Positioning	All (except TH255C)	1270	(50)
Rotate/Side Tilt	All	1219/1830	(48/72)
Side Shift	All	1219	(48)
Standard	All	1270-1830	(50-72)
Swing	TH514D, TL642D, TL943D, TL1055D, TL1255D	1830	(72)



Forks

	Model	Tine Length		Tine Width	
		mm	(in)	mm	(in)
Pallet	All	(1219/1524)	48/60	50/60	(2/2.36)



Lifting Hooks

	Model	Rated Capacity	
		kg	(lb)
IT Coupler	All (except TH255C)	5000	(11023)



Material Handling Arms

	Model	Extension	
		mm	(in)
Material Handling Arm	All	1687/3941	(66/155)



AEXQ2388

For more complete information on Cat products, dealer services, and industry solutions, visit us on the web at www.cat.com

©2017 Caterpillar
All Rights Reserved

Materials and specifications are subject to change without notice. Featured machines in photos may include additional equipment. See your Cat dealer for available options.

CAT, CATERPILLAR, their respective logos, "Caterpillar Yellow," and the POWER EDGE trade dress, as well as corporate and product identity used herein, are trademarks of Caterpillar and may not be used without permission.

